



£1,500 PCM

Harvest Drive, Lowestoft NR33 7NJ

01502 565877

**Lisa's  
Homes**  
Specialising in Lettings & Management

[www.lisashomes.co.uk](http://www.lisashomes.co.uk)



# Step Inside

---

## Key Features

- Large Business Unit for Lease
- Pakefield Location
- 2/3 Rooms/Offices
- Kitchen & Restrooms
- Allocated Parking

## Property Description

LARGE INDUSTRIAL UNIT AVAILABLE FOR RENT IN PAKEFIELD Lisa's Homes are pleased to offer a large storage unit at 4 Harvest Drive, Pakefield. This spacious unit is situated in a prime location near the A12 offering excellent accessibility to Lowestoft, Ipswich & Norwich. The property features a large unit for various businesses, with 3 separate rooms/offices, a kitchen and several restrooms, these are over two floors, providing a versatile space suitable for storage and allocated private parking for you and your clients visiting your business premises if you was to lease this. Enhance your company's image at Unit 4, Harvest Drive where your logo and branding will stand out in a professional setting expanding your business. Do not miss out on this amazing opportunity for your business, for more information or to arrange a viewing, please contact Lisa's Homes at 01502 565877.

## Main Particulars

LARGE INDUSTRIAL UNIT AVAILABLE FOR RENT IN PAKEFIELD

Lisa's Homes are pleased to offer a large storage unit at 4 Harvest Drive, Pakefield. This spacious unit is situated in a prime location near the A12 offering excellent accessibility to Lowestoft, Ipswich & Norwich.

The property features a large unit for various businesses, with 3 separate rooms/offices, a kitchen and several restrooms, these are over two floors, providing a versatile space suitable for storage and allocated private parking for you and your clients visiting your business premises if you was to lease this.

Enhance your company's image at Unit 4, Harvest Drive where your logo and branding will stand out in a professional setting expanding your business.

Do not miss out on this amazing opportunity for your business, for more information or to arrange a viewing, please contact Lisa's Homes.

This industrial unit is £1500 per month plus vat, this would be suitable for those larger companies needing more space and storage or a new potential business opportunity, this industrial unit offers flexibility and functionality to support your business growth.

Enhance your company's image at Unit 4, Harvest Drive where your logo and branding will stand out in a professional setting expanding your business.

Key Features:

Parking: Allocated parking spaces at the front of the unit for multiple vehicles, ensuring convenient access for staff, clients, and deliveries.

24/7 Access: The building offers 24-hour access, with flexibility to meet any specific requirements your business may have.

Building Overview: This expansive unit spans over two floors, designed to offer both functional workspace and storage solutions.

Ground Floor: Large unit, reception area / 2 rooms and several restrooms.

First Floor: 1 Large office/room with loads of storage and kitchen.

Convenient Location: Excellent transport links to Southwold, Ipswich, Norwich and London by car, bus, or train.

TERMS:

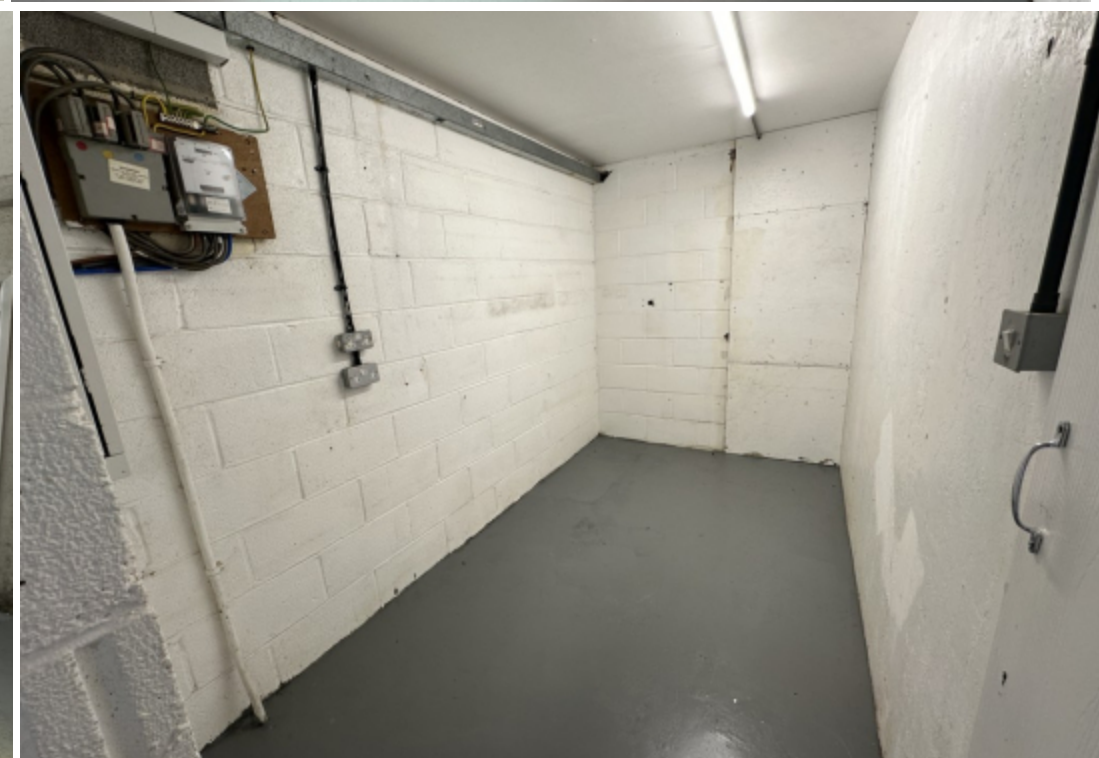
Lease Term: A new lease is available for a term of 6 years with 3 years rent review & break clause.

Rent: £1,500 per month (£1800 inclusive of VAT)

The new leaseholder will be responsible for the legal cost of the lease and ongoing maintenance of the unit.

VIEWING:

For further details or to arrange a viewing, please contact Lisa's Homes directly.



Telephone: 01502 565877



---

[www.lisashomes.co.uk](http://www.lisashomes.co.uk)